

SoMa

RESIDENCE 2321-2421

1 Bed | Home Office | 2 Baths

► Residence Highlights

- Ceiling Heights Up to 10'
- Quartz Kitchen Countertops and Backsplash
- Paneled Appliances
- Smart Temperature Control
- Bosch Washer and Dryer
- Recessed Lighting
- Keyless Residence Entry

► 100,000 SF of Amenities

The Landing at SoMA

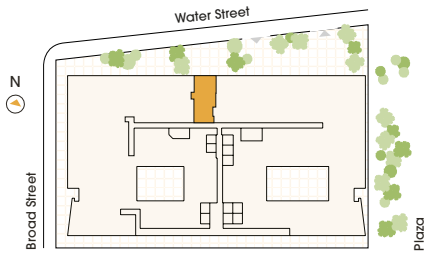
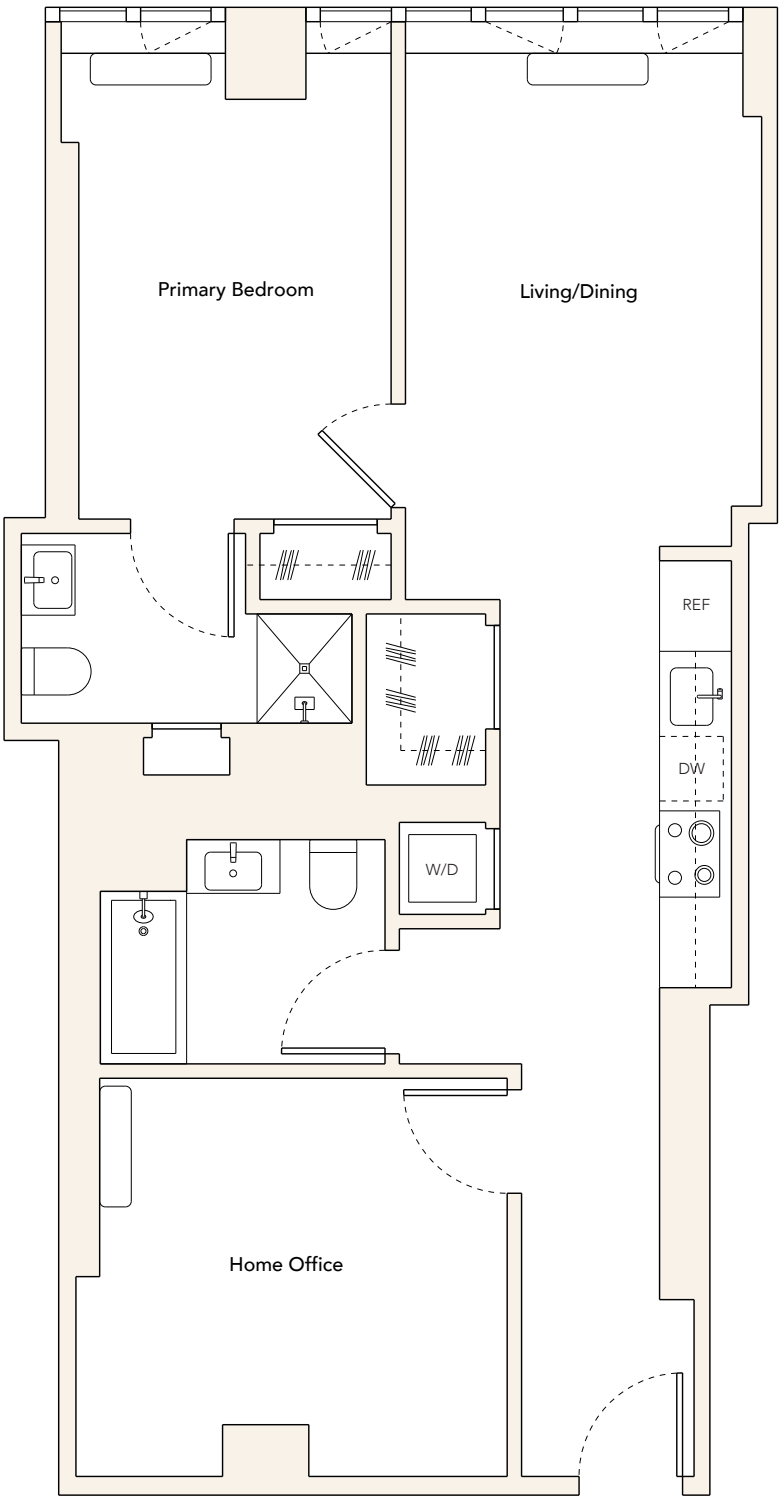
- 24 Hour Attended Lobby
- The Library
- SoMA Porte-cochere

The Club at SoMA

- | | |
|-----------------------|-------------------------|
| ► The Arcade | ► Athletic Club |
| ► VR Studio | ► Fitness Studios |
| ► Karaoke | ► All-Season Pool |
| ► Bowling Alley | ► Pickleball Courts |
| ► Sports Simulators | ► Basketball Half Court |
| ► Spa + Lounge | ► Art Studio |
| ► Infrared Sauna | ► Sound Studios |
| ► Experiential Shower | ► Kids Club |
| ► Salt Room | ► Pet Spa |
| ► Treatment Rooms | |

The Overlook at SoMA

- | | |
|-------------------------|-----------------------------|
| ► INDOOR | ► OUTDOOR |
| ► Private Dining Room | ► Rooftop Pool |
| ► The Respite Lounge | ► Rooftop Park |
| ► CoWork Lounge | ► Outdoor Grills and Dining |
| ► Virtual Meeting Rooms | ► Sun Deck |
| ► Conference Rooms | ► The Lawn |



SOMANYC.com | 212.825.2525
25 Water Street, New York, NY 10004



METROLOFT

COMPASS
DEVELOPMENT
MARKETING
GROUP

All residential details are approximate and subject to construction changes and omissions. Plans may contain minor variations from floor to floor. Window conditions may vary by floor.

